

BusinessLink
Software Support

Strat^egi

WEBMASTER GUIDE

Version V2R5

This manual applies to Strategi version V2R5 and was last revised in April 2004.

ADVANCED BusinessLink Corp. may have patents and/or patent pending applications covering subject matter in this document. The furnishing of this document does not give you any license to these patents.

Copyright © 1997 - 2009 ADVANCED BusinessLink Corp. and Advanced BusinessLink (Australia) Pty. Ltd. (formerly ADVANCED Systems Development Pty. Ltd). All rights reserved. This manual may not be reproduced in whole or in part in any form without the prior written consent of Advanced BusinessLink (Australia) Pty. Ltd or its authorized agent. Primary Authorized Agent in the United States of America is ADVANCED BusinessLink Corporation, Kirkland, WA, USA, 1-425-602-4777.

Every effort has been made to ensure the accuracy of this manual. However, ADVANCED BusinessLink Corp. and Advanced BusinessLink (Australia) Pty. Ltd make no warranties with respect to this documentation, and shall not be liable for any errors, or for incidental or consequential damages in connection with the performance or use of this manual, or the examples pertaining to products and procedures as described herein. The information in this manual is subject to change without notice.

Other trademarks, trade names and brand and product names used in this manual are trademarks or registered trademarks of their respective holders.

Printed in the United States of America.



Note to Readers

Built on the premise that technological solutions are useless unless they provide real-world business benefits, Strategi has been architected to provide your organization a foundation to enable creative breakthrough e-business solutions. This manual has been designed to enhance your usability experience with Strategi as well.

The latest versions of this document and other Technical Support Bulletins can be downloaded from ADVANCED BusinessLink Corp.'s Support Website, <http://support.businesslink.com>.

You may print this in duplex format using Adobe's Acrobat Reader, which is available for download from <http://www.adobe.com/products/acrobat/readstep.html>.

With some installs of Adobe Acrobat, your printer may not resolve the characters correctly, and once printed, all characters will appear as rectangles or as symbols. If this happens select "Print as image" from the Acrobat print dialogue and the print should occur correctly.

If you have any questions, comments or suggestions, please feel free to contact us via e-mail at 'support@businesslink.com'.

Sincerely,

BusinessLink Software Support

Table of Contents

NOTE TO READERS	3
OVERVIEW	5
GETTING STARTED	5
INSTALLING WEBMASTER	5
<i>Pre-requisites</i>	<i>5</i>
<i>Installation Steps</i>	<i>5</i>
STARTING WEBMASTER	6
USING WEBMASTER	6
WEBMASTER INTERFACE	7
<i>Check Out</i>	<i>7</i>
<i>Check In</i>	<i>7</i>
<i>Get Zone</i>	<i>8</i>
<i>Refresh</i>	<i>8</i>
<i>Pause</i>	<i>8</i>
<i>Resume</i>	<i>8</i>
<i>Menu</i>	<i>9</i>
ZONE STATE	9
CONTROL FILES	10
ZONE DIRECTORIES	10
ADVANCED TOPICS	11
CONNECTING TO MULTIPLE AS/400S	11
<i>Overview</i>	<i>11</i>
<i>Steps</i>	<i>11</i>
COMMAND LINE PARAMETERS	12
<i>Parameter Details</i>	<i>12</i>
LIST OF FIGURES	15
INDEX	16

Overview

Webmaster is a website management utility by ADVANCED BusinessLink that provides a convenient mechanism for copying files to and from a Strategi-based website. It is a Java application that can be installed on any computer for which Java 1.1 is available. The default (shipped) install is for Windows PCs, and includes Sun's Java Runtime Environment (JRE) within the install package. However, if you wish to run Webmaster on another environment for which Java is available, we can make the .jar file available upon request. Contact our support department for details ('support@businesslink.com').

Strategi introduces the concept of websites and zones. A website contains zones, and a zone is analogous to a book, in that it is the smallest unit that may be checked in or out at a given time. This ensures the website remains in a consistent state. Webmaster supports check out, check in, refresh, or get of a selected zone.

Once you have used our Webmaster utility program, we hope you find it a simple and intuitive means of website maintenance.

Getting Started

Installing Webmaster on a PC and setting it up for first time use takes only minutes. Once installed and started, Webmaster will easily transfer web pages and images to and from the AS/400.

Installing Webmaster

In order to successfully install Webmaster, the following pre-requisites and steps must be accomplished. Website maintenance can begin immediately after installation is complete.

Pre-requisites

- Strategi must be installed and running to download Webmaster
- The PC to install Webmaster on must contain approximately 11 Mb of free disk space
- Obtain the IP address (or domain name) and port number (default is 43808) used for Webmaster (contact your Strategi Administrator for details)
- User must be given *READ authority to the Resources website WEBMASTER zone (contact your Strategi Administrator)
- Ensure installer has the appropriate authority to install programs onto the PC (some PC configurations require Administrator class authority to install programs)

Installation Steps

- Open a web browser and go to your company's AS/400 http address followed by the directory path '/resources/user/downloads/webmaster/homepage.htm' (e.g., <http://yourAS400.com/resources/user/downloads/webmaster/homepage.htm>)
- Enter your authentication details: Strategi Username and Passphrase
- Click on the appropriate link for your operating system to begin downloading Webmaster
- When prompted, choose to Save the file
- Locate the downloaded "WebMasterInstall.exe" file and execute it (usually accomplished by "double-clicking" on the file)
- Choose the Installation Location for the program objects. For Windows the default is [C:\Program Files\BusinessLink\WebMaster]

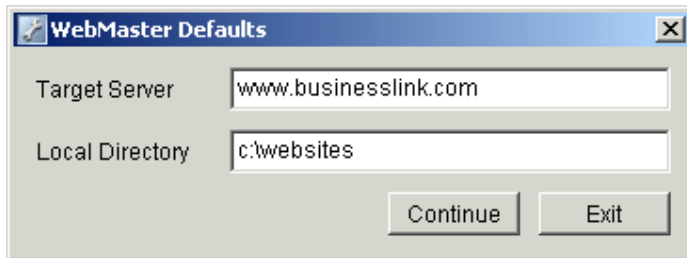
- Choose the Shortcut Folder. For Windows the default is the “BusinessLink” program group

Installation is now complete.

Starting Webmaster

To start Webmaster navigate to Start | Programs | BusinessLink | WebMaster | WebMaster

Upon starting this installation of Webmaster for the first time, you will be prompted to enter a WebMaster Default “Target Server”, which can be specified as an IP address or domain name and a “Local Directory” in which you will store the PC copy of the website files.



This information is stored into webMaster.dft in the install directory and can be edited with a text file or deleted if the information needs to be changed.

Using Webmaster

Once you have loaded Webmaster, an authentication dialog box will pop up (see Figure 1). When Webmaster is started and the authentication dialog box is displayed, clicking the "Cancel" button will cancel and close the program.

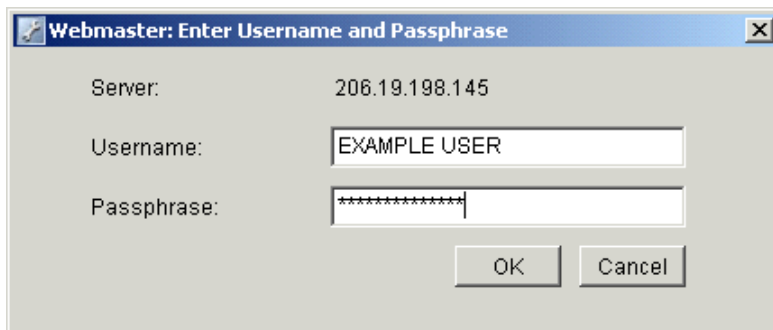


Figure 1 - Authentication Dialog Box

Enter your Strategi Username and Passphrase. Any zones you have READ and WRITE (*READWRITE) access to will appear in the dropdown list (see Figure 2).

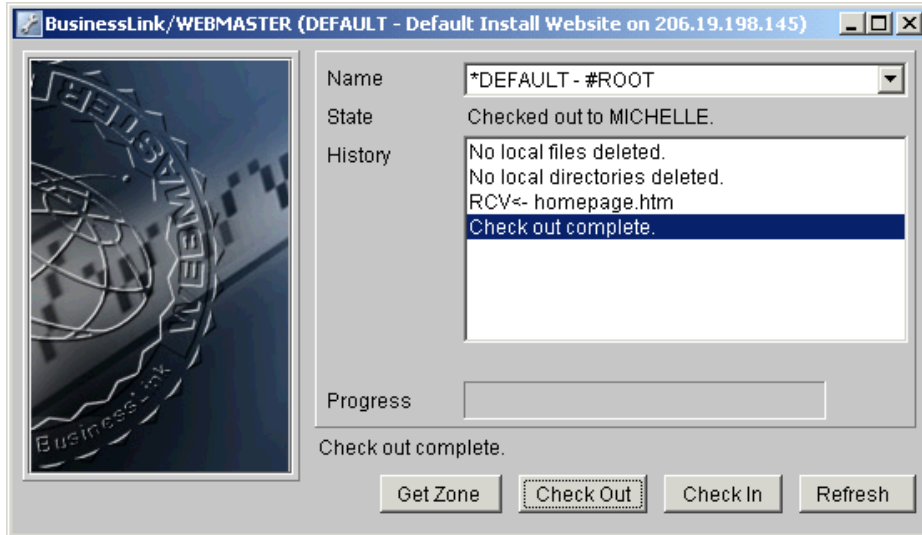


Figure 2 - Webmaster Interface Window

If the Username or Passphrase is mistyped, the message “User information is incorrect” will be displayed. If the Username and Passphrase are correct, but the administrator has not provided access to any zones, then the message "User has access to no zones" will display. After an administrator has provided access to one or more zones, right-click to bring up the context menu and choose "Update zone list". The view will update and display accessible zones.

If you need to display the authentication dialog box again to re-enter your Passphrase or to log on with a different Username, right-click and select "Re-Authenticate." If you wish to update the zone list at any time, right-click and select "Update zone list."

Once you have a zone list, you can select a zone to check in or out. Usually it is a good idea to start by checking out a zone. Then, you can make modifications to it and check it back in. This way, you will not accidentally destroy a site that already exists on the webserver.

Webmaster Interface

The Webmaster interface contains a drop-down website/zone list as well as a few commonly used buttons. This section describes how to work with the program window.

To operate on a given website and zone, select it from the drop-down list.

Check Out

"Check Out" copies only those files from the AS/400 to the PC that changed, in the specified website/zone, replacing any local files with the same names as the ones on the AS/400 and deleting any local files which do not exist on the AS/400. This is a destructive process that synchronizes the website/zone contents of the PC to match that of the AS/400.

Check In

"Check In" copies only those files from the PC to the AS/400 that changed in the specified website/zone, replacing any AS/400 files with the same names as ones on the PC and deleting any files on the AS/400 which do not exist on your PC.

This is a destructive process that synchronizes the website/zone contents of the AS/400 to match that of the PC. The result will be an identical copy of the PC files.

Once you click "Check in" or "Check out", the buttons will change to "Pause" and "Cancel". The Cancel button cancels the current operation, then updates the date/time stamps from the server. If the server is not responding fast enough, you can click "Cancel" again and cancel even the time stamp update. However, this is not recommended, as the date/time stamps may be lost, causing Webmaster to upload or download the entire site again the next time you perform an operation (instead of only those files that have changed).

Get Zone

"Get Zone" performs the operation of a "Check Out" without actually checking out the zone. If the zone state was "Checked out to ...", a status change conflict window will popup alerting that the zone is currently checked out. This is to inform the user they might not have the most recent version of the zone. If the user proceeds, Webmaster will continue and copy the files to the PC according to the rules of a "Check Out". However, the state will not change but remain checked out to the individual who originally had the zone checked out. If the zone state was "Checked in by ...", the state will change following the "Get Zone" operation and become "Checked in by <your user name>." By changing the state it signifies that someone has accessed the zone.

This is a destructive process that synchronizes the website/zone contents of the PC to match that of the AS/400.

Refresh

Refreshing performs a "Check In" and "Check Out" operation without having to manually check it back out yourself. The site remains marked as checked out to you. This is useful when making changes to a site and you want to try and keep others from checking it out. However, they could still override the warning and checkout/checkin while you have it checked out.

Pause

"Pause" suspends the current operation, and the button changes to "Resume."

When Webmaster is paused, its network usage drops to nothing, allowing you to perform other activities with more available bandwidth. For instance, if you are using Webmaster over a PPP dialup connection and you need more bandwidth to access a website, you could pause a Webmaster operation that was being performed in the background to free up enough bandwidth to navigate the Internet at a reasonable speed. Later, you would then "Resume" the operation to finish the file transfer.

Resume

"Resume" continues the check in or check out procedure previously paused.

If you attempt to exit Webmaster (or shutdown Windows) while an operation is in progress, Webmaster will notify you that you must first Cancel the current operation before you can exit Webmaster. If you really wish to terminate the operation with all the damage that could entail, you can terminate the entire program (using CTRL-ALT-DEL in Windows).

Menu

When no operations are in progress you may right-click to get a context menu. At present, the menu items are "Update zone list", "Re-Authenticate", "Toggle Debug Mode", and "About Webmaster."

"Update Zone List" reconnects to the server and gets the list of zones again, also updating the site status for the currently selected site.

"Re-Authenticate" re-displays the authentication dialog box, then updates the zone list. This dialog will also be displayed when a login session times out, or is forcibly logged out from the server.

We recommend never using your website directories as a backup location for extra files you do not intend to put on your website. If you do, you might inadvertently store them on your website, or accidentally delete them (by checking out the website over them).

Zone State

As you select various website/zone combinations, you will see the current zone state posted underneath the dropdown list of zones. If a zone is checked out to someone other than you, or you attempt to check in or check out when the site is already checked in or checked out, you will be warned by the Status Change Conflict dialog box of the consequences of overriding the current state—do not ignore the diagnostic message (see Figure3). Contact the person who has it checked out and have them check in the zone before you attempt to access it. Otherwise, the last person to check in changes to the site will override and destroy all changes made by other people who had it checked out simultaneously.

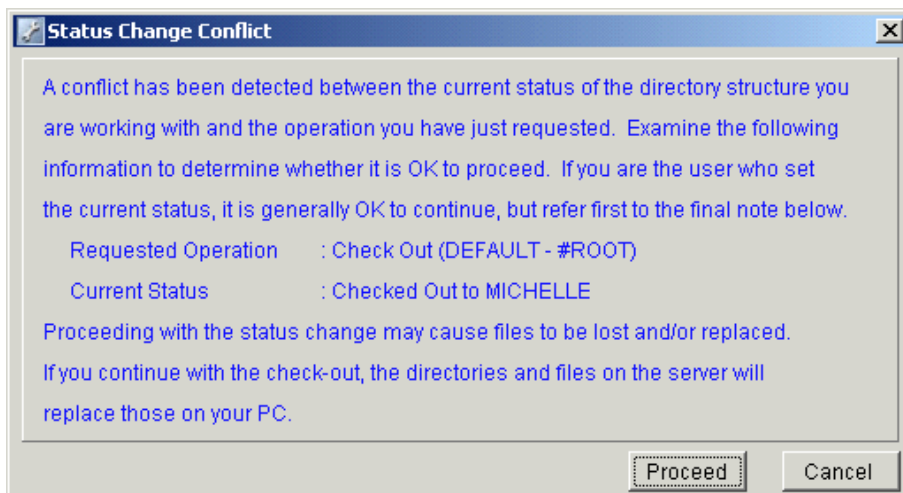


Figure 3 – Status Change Conflict Dialog Box

If you are the last person who had the site checked out and you attempt another check out, the check out will completely replace the local copy of the zone with what is currently on the AS/400. Once you have checked out a zone, the files are located under the path you specified.

Control Files

In the directory specified as the Websites Location, there may be one or more files beginning with a tilde (~) character (see Figure 4). These files contain the last date the server has for each file you checked in or out. If you remove these files, the server will think all the files need to be transferred again.

Zone Directories

Underneath the Websites Location directory are directories corresponding to websites defined on your ADVANCED BusinessLink Strategi server. Each of those website directories contain zone directories that belong to the website. The zone directories will contain the files you checked in or out.

For example, if you chose the default directory (c:\websites) during install, c:\websites will contain directories for your websites, as well as the date stamp files for each site and zone. If you are checking out the "jobs" zone of the "businesslink" website, the path of your zone files would then be c:\websites\businesslink\jobs.

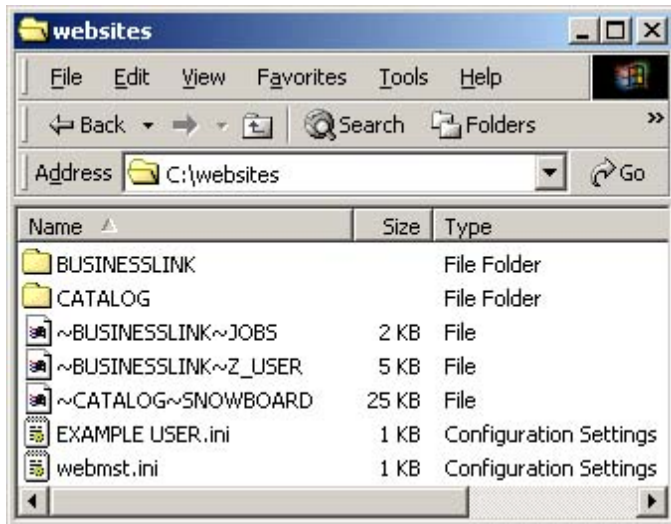


Figure 4 - Example Websites Location Directory on the PC

Advanced Topics

As you gain more experience using Webmaster, you may find the following subjects of particular interest. There may be times when you need to Webmaster multiple AS/400s, or would like to customize some of the Webmaster properties by modifying the command line parameters. Our hope is the remainder of this document will provide you, the experienced Webmaster user, a greater opportunity to enhance your productivity and add additional tools to your toolset.

Connecting to Multiple AS/400s

As in many areas of life, there is more than one way to accomplish a task – the same is true here. We will describe one way to accomplish connecting Webmaster to multiple AS/400s from the same PC and copy of Webmaster.

Overview

You can make one installation of Webmaster operate against multiple servers by copying the default shortcut, and editing the "-dir *DEFAULT" and "-server *DEFAULT" parameters (see below for description of these parameters).

For supported operating systems the installer creates a special executable launcher. A special webMaster.lax file contains parameters for creating and running the VM. This file contains comments for each parameter. For example, under Windows the default is:

```
"c:\Program Files\businessLink\webMaster\webMaster.exe" -dir *DEFAULT -server *DEFAULT"
```

Webmaster can also be run as any other Java application, the shortcut you use should point to the Java Runtime Environment. The "-cp webMaster.jar" option specifies the Java CLASSPATH as the Webmaster .jar file. It is important to ensure the current working directory is the one to which Webmaster was installed. The webMaster.jpg, webMaster.log and webMaster.dft files are all read/written in the current directory.

Following these parameters, the name of the main class file is specified (com.businesslink.sgi.webm.webm). The remainder of the command line consists of parameters to Webmaster. Thus, an example standard command line for Windows is:

```
"c:\Program Files\javaSoft\jre\1.1\bin\jre.exe" -cp webMaster.jar com.businesslink.sgi.webm.webm -dir *DEFAULT -server *DEFAULT
```

Changing jre.exe to jre.exe enables the Java console, allowing you to see debug messages to help solve any problems you may encounter (the webMaster.log is only written if the specialized launcher is used).

Steps

Follow these steps to enable a Webmaster connection to another AS/400.

- Create a copy of the Webmaster shortcut desktop icon and place it onto the desktop (if you do not currently have a Webmaster shortcut desktop icon, create one for the current server configuration then proceed)
- Right-click on the new icon and select "Properties"
- On the command line (probably labeled "Target") change the Websites Location (default is *DEFAULT) to a new value (e.g., c:\websitesnew) (*see Figure 5*)

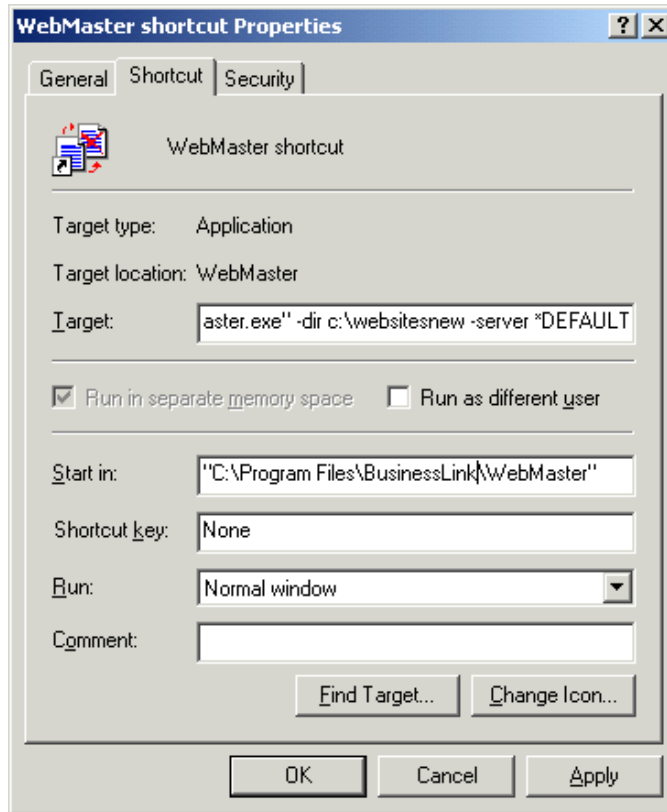


Figure 5 - Changing the Websites Location and Server Properties

- On the command line change the domain name (or IP address) to point to the new domain name or IP address
- Launch Webmaster by double-clicking on the new icon to verify Webmaster is able to successfully connect to the new location

Command Line Parameters

Command line parameters allow some customization of the Webmaster environment. This section describes the parameters and how to use them.

Parameter Details

The following parameters are necessary to load Webmaster:

```
"C:\Program Files\javaSoft\jre\1.1\bin\jrew.exe" -cp webMaster.jar com.businesslink.sgi.webm.webm
```

There are several additional parameters, some required and some optional for Webmaster operation.

Required

-dir <sites_dir>

-server <server_url> {or} <ip_address>

These parameters may either be specified in the first two positions, or may be specified in any order if the leading `-dir` and `-server` are provided:

`<sites_dir>` The directory in which your websites will reside. For example, `C:\Websites`
`<server_addr>` The domain name or IP address of your server. It may optionally be followed by a colon (:) and port number. For example, `234.56.78.9:12345`. The port number corresponds to the port the server was started with default is 43808 (0xAB20 in hexadecimal).

Optional with Values

`[-user <username>]`
`[-pass <password>]`
`[-cmd <command>]`

`<username>` Your Strategi username.
`<password>` Your Strategi Passphrase (password). This should be provided if Username is provided, unless the password is blank. If the username is provided, authentication is attempted using the given username (and passphrase, if any) without displaying the authentication dialog box. Users will not be able to change the given username/password from the GUI environment if this option is specified. This could be used to provide more limited access to Webmaster.
`<command>` One of CHECKIN, CHECKOUT, REFRESH, or GETZONE. Performs the specified command and exits Webmaster immediately.

Using the `-cmd <command>` structure can be useful for automating checkin of files from a batch file, etc. The GUI environment will not be displayed at all, so for this, you will definitely want to enable the Java Console (by using `jre.exe` instead of `jrew.exe`). This can be combined with the `-user/-pass` options to automatically logon and perform the requested action.

After the `-cmd <command>`, add an `'=<site>/<zone>'` (without the quotes). For example, to automatically get the contents of a zone without checking it out, you could use the following parameters:

```
c:\websites www.hostname.com -user USERNAME -pass PASSWORD -cmd getzone=mysite/myzone.
```

The refresh command will also be most useful, as it will leave the site checked out to the given user, reducing the problem of other users who have access to the site checking it out. (However, if that did occur, Webmaster will ignore any warnings and perform the desired operation anyway when running in command line mode).

NOTE: If you attempt to set up Webmaster to perform an automated operation, you may run into the command-line length limitations of Windows. If you run out of space on the command line (or the extra parameters seem to be truncated), you can reduce the required space by using a relative path. For example:

```
"..\..\JavaSoft\JRE\1.1\bin\jre.exe" -cp . webMaster.jar com.businesslink.sgi.webm.webm c:\websites\ 123.45.67.89 -user User -pass password -cmd refresh
```

This will work if the current directory is the default: `C:\Program Files\BusinessLink\Webmaster`

If you can't reduce the length of the path, try installing Webmaster in a different directory closer to the root (and with a shorter pathname).

Optional without Values

`[-norefbtn]` Hide the refresh button and re-enable the older interface (with a refresh checkbox to cause "Check In" to act like "Refresh"). `-refbtn` is also tolerated (but does nothing).

- [-nogetbtn] Do not display the "Get Zone" button.
- [-nozonsts] Do not display the "*" or "+" next to checked-out sites. -zonsts is also tolerated (but does nothing).
- [-nobeep] Turn off beeping after operation completion.

List of Figures

Figure 1 - Authentication Dialog Box	6
Figure 2 - Webmaster Interface Window	7
Figure 3 – Status Change Conflict Dialog Box	9
Figure 4 - Example Websites Location Directory on the PC.....	10
Figure 5 - Changing the Websites Location and Server Properties	12

Index

Authentication	
Dialog box	6, 7, 9, 13
Passphrase.....	6
Username.....	6
Authority	
*READWRITE.....	6
Buttons	
Cancel.....	6, 8
Check In.....	7, 8, 14
Check Out.....	7, 8
Get Zone	8, 14
Pause.....	8
Refresh.....	8, 14
Resume	8
Checked out	8, 9
Command Line Parameters	
-cmd.....	13
-cp	13
-dir	12, 13
-nobeep	14
-nogetbtn.....	14
-norefbtn	14
-nozonsts.....	14
-pass.....	13
-server	12, 13
-user	13
Date/time stamps	8
Default	13
Directory.....	13
Menu	
About Webmaster	9
Re-Authenticate	7, 9
Toggle Debug Mode.....	9
Update zone list	7, 9
Messages	
"User has access to no zones."	7
"User information is incorrect"	7